

## Behind the Design: Belden House & Mews

WORDS BY: ALISSA PONCHIONE • PHOTOS BY READ MCKENDREE



Set on a storied stretch of Litchfield County, [Belden House & Mews](#) blends centuries of architectural history into a richly layered design.

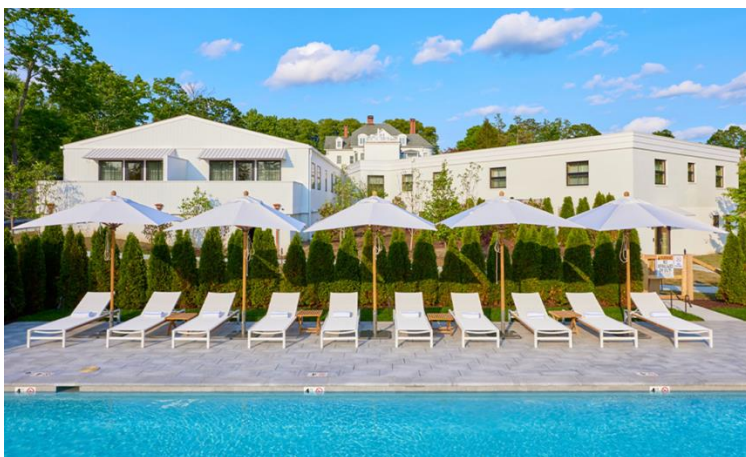
Originally built in 1888 as a private home, the stately mansion—along with the midcentury Mews building added in 1959—has been thoughtfully reimaged by [Champalimaud Design](#) into a 31-room hotel, breathing new life into the rural town. “We wanted to create a sense of home while also creating a sense of place,” says firm principal Courtney Brannan.

Across the property—from the residential-style reception to the jewel-toned bar and light-filled attic suite—the New York-based studio’s design brings a refined, residential feel that honors the site’s evolution.

“We want Belden House to be more than a hospitality experience,” she adds, “but a place that represents this special town and lives in harmony with its community.”



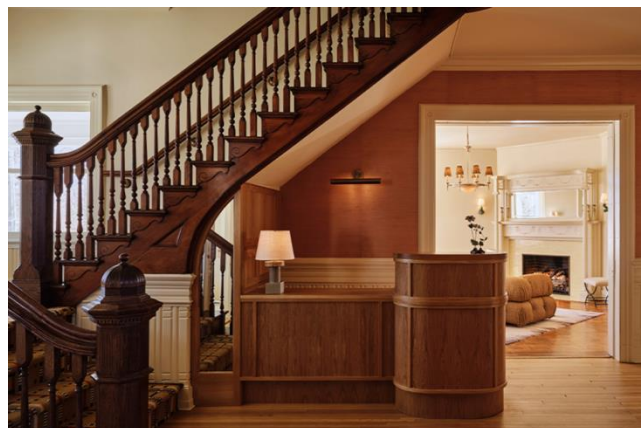
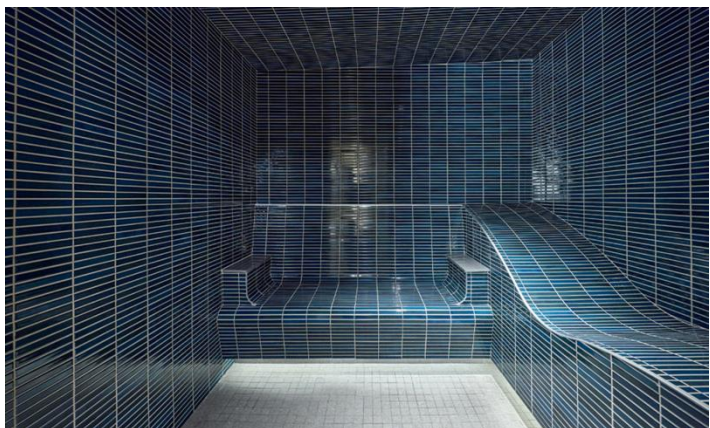
In the dining room, the design team updated the fireplace with green tiles from local manufacturer **Bantam Tileworks** that add texture to the original ornate mantle. The custom banquette (featuring **Dedar** pillow and banquette fabric with **Samuel & Sons** accent piping) frames the perimeter and “captures this idea of the window bench from the living room and replicates it here where there’s great natural light,” Brannan says. In addition to roman shades from **Holland & Sherry** (fabricated by **Lakeville Interiors**), chandeliers from Champalimaud’s collection with **Visual Comfort, In Common With** sconces, and **Zafferano** tabletop rechargeables imbue the interiors with a soft glow, while tables made by local maker **Ian Ingersoll** and **Ton** chairs fill the space.



The mid-century-inspired Mews building—home to 20 guestrooms—backs the pool, which is framed by umbrellas and loungers from **Teak Warehouse**. Built for the property, the completely new area is a “gamechanger in the region,” says Brannan, where there’s an absence of similar outdoor amenities.

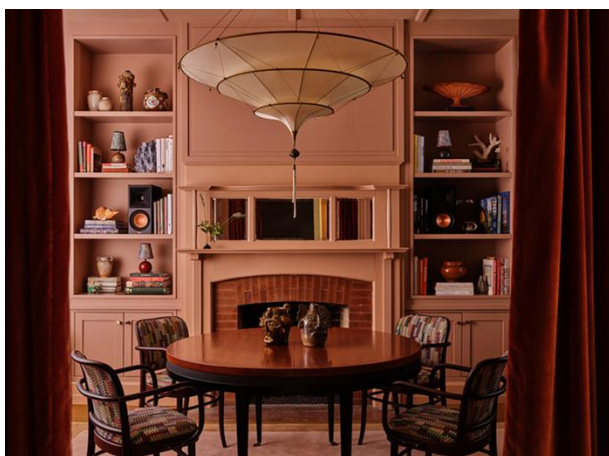


Formerly a sunroom, the green-hued jewel box of a bar commands attention in the dining room. Ceiling paneling existed before, and the team carried it through to the newly built bar done by **White Dog Woodworking**. The pop of color is courtesy of **Benjamin Moore** and evokes a “swanky London vibe,” Brannan says, which comes alive thanks to fringed pendants from **Honoré**, whimsical table lamps from **House of Hackney**, and accent lights from **Visual Comfort**.



The pool is adjacent to a subterranean spa. Upon arrival, guests are led from an ethereal reception to a dramatic steam room. Here, white floor tiles from **Nemo Tile + Stone** and walls wrapped in blue tiles from **Daltile** make the spa feel “authentic to the property,” Brannan notes.

When guests enter the hotel, they’re greeted by a reception desk from **White Dog Woodworking** tucked under the staircase with its original spindles and featuring plaid carpeting from **CM Hospitality** that carries through to the corridors. “We wanted to create these warmer layers,” Brannan explains. This is highlighted by the grasscloth wallcovering by **twenty2**, a table lamp by local manufacturer **Dumais Made**, and a picture light by **Mullan Lighting** that gives the space a residential feel.



In the Library, another original fireplace adds a layer of history to the custom table by **Dumais Made**, the **Fortuny** ceiling light, wall-to-wall-carpet from **Kasthall**, and **Ton** chairs upholstered in **Pierre Frey** fabric that “kind of looks like Missoni,” says Brannan. Dumais also made custom lamps that sit in the built-in shelves, which are filled with books, artwork, and sculptures that are either family-owned or sourced locally.

Because every layout was different, the team had to get creative when it came to the guestrooms in the main house. Take that attic, which has been transformed into a three-bedroom suite. The **twenty2** provided custom striped wallcovering that complements sofas from **Sixpenny** and **Anthropologie** as well as a custom window bench from **Carlos Custom Furnishings** that is topped in **Dedar** fabric. A coffee table from owner Anthony Champalimaud's personal collection completes the look.



During the renovation, Brannan and the team uncovered many interesting details. Among them is the pre-existing window bench (now covered in **Casamance** fabric and flanked by wicker lamps from **Soho Home**) in the living room. When the team opened it up, they found an old wallcovering in a wisteria pattern, which they incorporated into some of the guestrooms. The centerpiece fireplace complements an original chandelier that Champalimaud updated with new shades from **Shandells**. A cozy couch by **B&B Italia** in **Krabet** fabric sits on a rug from **the Rug Company**, while the corner banquette from **Carlitos Custom Furnishings** creates an intimate nook. “We made this room feel like a lounge space that could also be used as a coworking space,” Brannan says.